



**Challenge Make  
Achievements Attain**

# Contents

## 01 Challenge Dream TFF System

|                            |    |
|----------------------------|----|
| Product Features .....     | 03 |
| Application Scenes .....   | 04 |
| Aystem Advantage .....     | 05 |
| Process Method .....       | 07 |
| Challenge Dream 3P .....   | 08 |
| Ordering Information ..... | 08 |

## 02 Challenge Jump SMART PUMP

|                                 |    |
|---------------------------------|----|
| Product Features .....          | 09 |
| Application Scenes .....        | 10 |
| Challenge Jump Series .....     | 11 |
| Challenge Jump Pro Series ..... | 14 |
| Ordering Information .....      | 17 |

## 03 Accessories

|                   |    |
|-------------------|----|
| Accessories ..... | 18 |
|-------------------|----|

# Challenge Dream TFF System

The “Challenge Dream” series of products is a multi-purpose automated TFF system. We can provide customers with tailor-made solutions, with system scales from laboratory-scale testing to process scale-up and Pilot production, providing a high degree of automation, integration and cost-effectiveness. The product has the characteristics of automation, high integration, and high cost-effectiveness.



## Product Features

### 01. Simultaneously used for development and production, flexible and versatile

Challenge Dream can stable support for all needs from process research and development to pilot scale up and small-scale commercial production

### 02. Convenient for linear conversion of process parameters

Challenge Dream is a GMP dytem, it can provide users with a stable and reliable development environment, and consistent process parameters also lay the foundation for subsequent production scaling up.

### 03. Smart operating system, easy to use and efficient

Plug and play hardware design enables the system to quickly switch between different application scenarios (UF/DF/MF) and states (R&D/production), greatly improving work efficiency and flexibility, while reducing fixed assets investment.

### 04. Digitization of data recording

We provide excellent and easy-to-use “Challenge Navigator” software, The “Challenge Navigator” has an intelligent operating interface and an electronic signature system that complies with 21 CFR Part 11, It ensures the stability and repeatability of the process, and according to the automated operation mode and program architecture of GMP equipment, it provides great convenience for reducing or enlarging the production process.



# Application Scenes

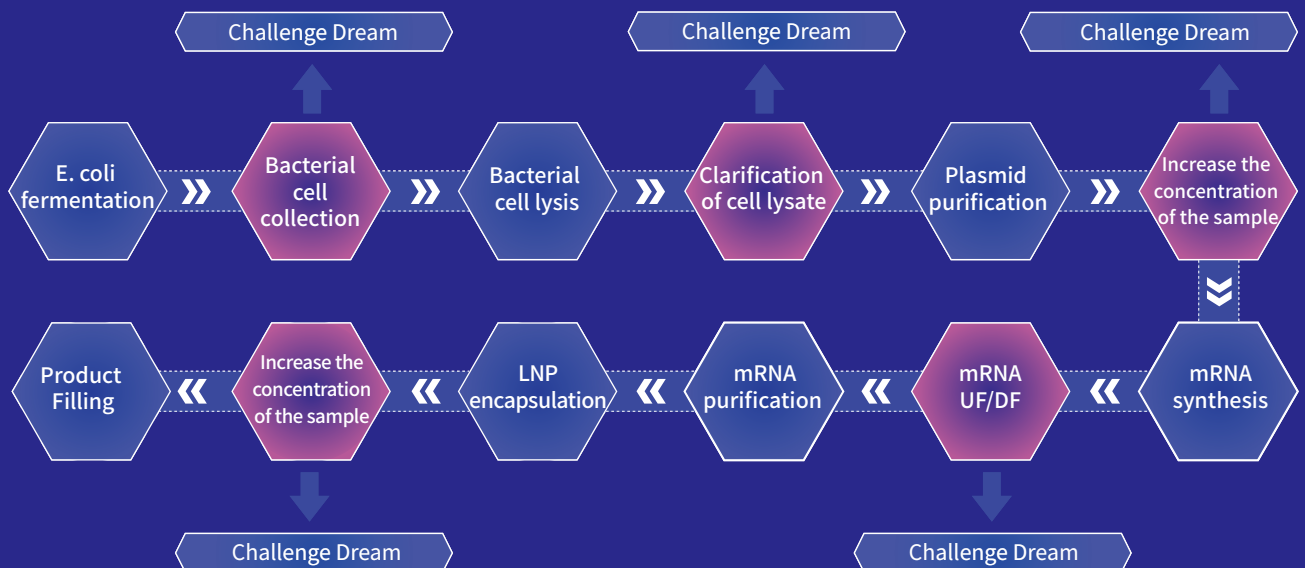
**[Applicable products]** Antibodies/vaccines/Cell and Gene Therapy/blood products/IVD/ biochemical products

**[Applicable process]** UF/DF, MF,NF

**[Typical application scenarios]**

- |   |   |
|---|---|
| > Cell Harvesting & Concentration             | > Polysaccharide Purification                                     |
| > Clarification of Cell culture medium&lysate | > Latex and nanoparticle fractionation and filtration             |
| > Protein Purification                        | > Liposomes Purification  |
| > Plasmid Purification                        | > Blood product dealcoholization&concentration& metal ion removal |
| > Virus purification                          | > Depyrogenation  |

## Challenge Dream typical application scenarios:Preparation of mRNA products



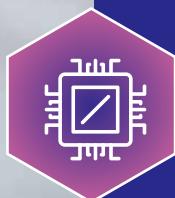
# System Advantage

## A. Hardware



### Integration

- Compact layout with small dead volume;
- Integrated design, overall aesthetic and elegant



### Best compatibility

- Adaptable to any filter components from various suppliers (hollow fiber&Cassettes)
- Can meet the usage needs from R&D and commercial production



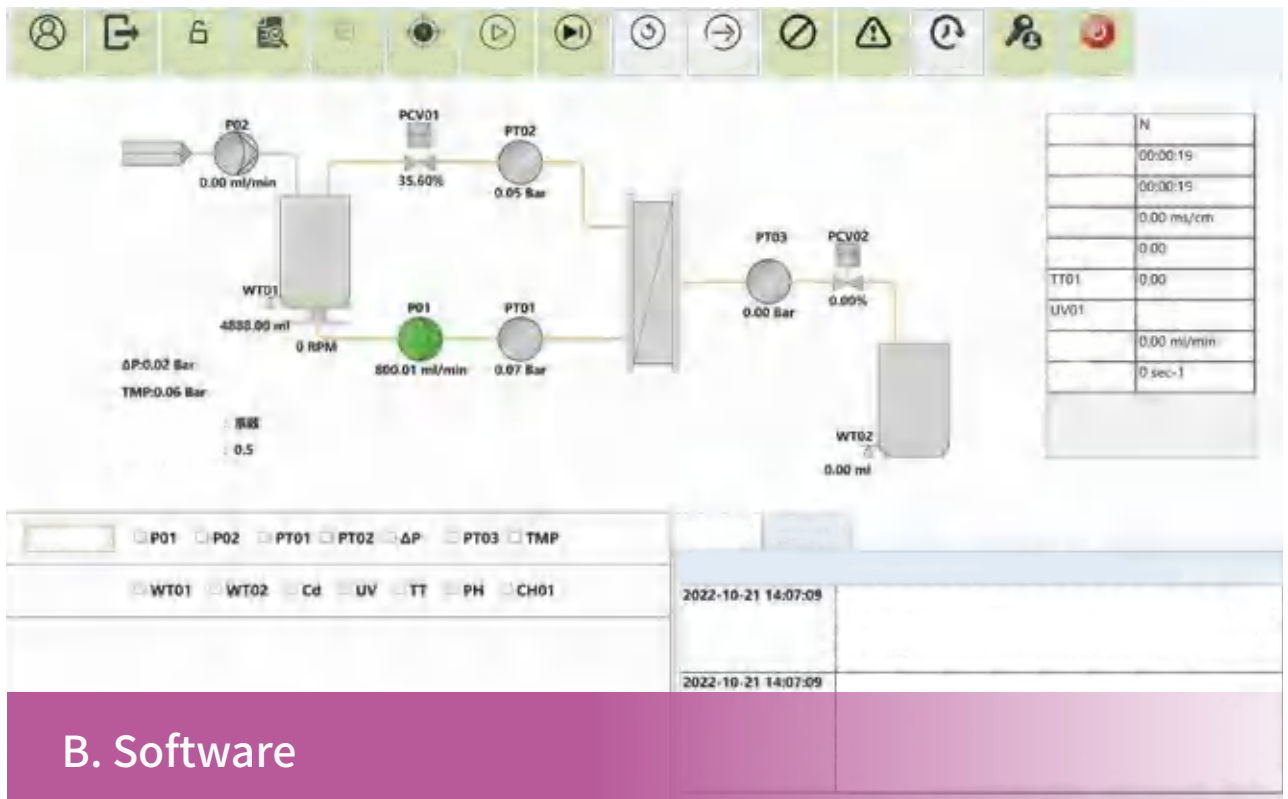
### System modularization

- The standard configuration of the system includes: fluid power unit, weighing unit and Pressure detection&control unit
- Optional sensor components: Cd/pH/UV

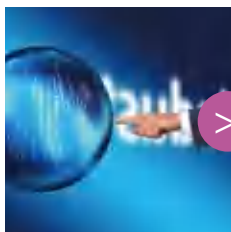


### Single Use

- Single Use parts, Eliminates cleaning validation, reduces cross contamination risks, and improves process development efficiency

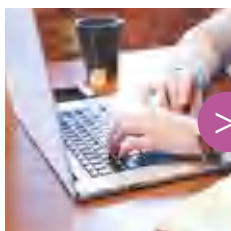


## B. Software



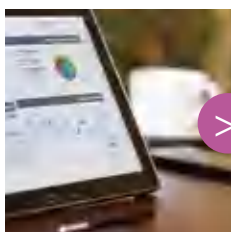
### Smart and automation

- Multiple preset automation programs:UF, DF, wash, NWP.....
- Running Multiple Programs in Combination
- A convenient and easy-to-use data processing and analysis system to assist users in operation



### Humanization

- The new generation Challenge Navigator control software is easy to operate, fully functional, and easy to learn and use
- Multi level user permission management
- Check the system status, warnings, and alarm information at any time;
- The software interface is clear and intuitive, which can directly display various key parameters during operation:Feed flow, pressure, TMP, ΔP,FLUX.....



### Audit trail

- The system has an audit tracking function that complies with cGMP, The electronic signature system complies with FDA CFR PART11.



## Process Method

### C.Service



#### High efficiency and low maintenance costs

- provide singleuse parts, eliminating cleaning validation time for greater efficiency
- Easy maintenance operation



#### Complete file system

- Provide 3Q files

| Mode   | Method editing   | Notes                           |
|--------|--|---------------------------------|
| AUTO   | N mode(UF MODE)  | Free combination Preset program |
|        | X mode(DF MODE)  |                                 |
|        | N-X mode (UF-DF MODE)                                    |                                 |
|        | N-X-N mode (UF-DF-UF MODE)                               |                                 |
|        | N-X-X-N mode (UF-DF1-DF2-UF MODE)                        |                                 |
|        | wash mode  |                                 |
|        | NWP mode   |                                 |
|        | TMP optimize mode  |                                 |
| Manual | Manually setting the operating parameters of each device |                                 |

# Challenge Dream 3P

A TFF product used for laboratory level pilot process development. The equipment structure is compact, and the pipeline design has been specially optimized. The minimum circulating volume of the system can reach 10ml. Paired with a disposable flow path, compared to traditional material liquid separation and purification treatment, it provides high-precision and repeatable experimental results, providing users with an ultra cost-effective solution

## Challenge Dream 3P Specifications

| Project            | Describe                               | Specification or Description  |   |
|--------------------|--|---|---|
| Filter             | Filter type                            | Hollow fiber  | Cassettes                                 |
|                    | Suggested sample processing scale      | 20 ml-10 L  | 20 ml-15 L                                |
|                    | Recommended membrane area              | 20 cm <sup>2</sup> -3700 cm <sup>2</sup>  | 100 cm <sup>2</sup> -5000 cm <sup>2</sup> |
| Basic              | Feed pump                              | Easy-Load®peristaltic pump, MAX flow 2.3 LPM<br>Compatible with L/S® 13, L/S 14, L/S 16, L/S 25, L/S 17, L/S 18, etc.                                     |   |
|                    | Replenishment pump                     | Easy-Load®peristaltic pump, MAX flow 2.3 LPM<br>Compatible with L/S® 13, L/S 14, L/S 16, L/S 25, L/S 17, L/S 18, etc.                                     |   |
|                    | Pressure sensor                        | PSU material; Pressure range -7~75psi (-0.48~5.2bar)  |   |
|                    | HMI                                    | Microsoft Surface Pro PC, Pre installed "Challenge Navigator" software  |   |
|                    | Automatic regulating valve (Retentate) | Automatic adjustment of TMP   |   |
|                    | Weighing unit                          | Range 0-17kg, visual reading 0.1g. (* Multiple specifications available)  |   |
|                    | Magnetic stirring                      | HMI control, adjustable speed   |   |
|                    | Container                              | PSU material or user provided flat bottomed container   |   |
|                    | Pipe                                   | According to the process requirements, various platinum vulcanized silicone hoses, thermoplastic pipelines, etc. that meet the specifications can be used |   |
|                    | Bracket                                | Hollow fiber  |   |
|                    | Automatic regulating valve (Permeate)  | Automatic control of permeate flow rate   |   |
| Options accessory  | UV                                     | 200 nm-800 nm   |   |
|                    | pH                                     | pH 0-14   |   |
|                    | Cd                                     | With temperature compensation function, display temperature, 0.02-200ms/cm  |   |
| Environment        | operate temperature                    | 0-40 °C   |   |
|                    | Operating humidity                     | 10%-90%   |   |
|                    | IP Class                               | The whole machine can be wiped and cleaned, IP33  |   |
|                    | Power                                  | 1.1A, 220V, 50/60 Hz  |   |
| Overall dimensions | Main unit                              | 440mm*530mm*500 mm(L*W*H)   |   |
|                    | Replenishment unit                     | 375 mm*455 mm*250mm(L*W*H)  |   |
|                    | Permeate unit                          | 300 mm*455 mm*250mm(L*W*H)  |   |
|                    | weight                                 | 55kg  |   |

## Other specifications

| Specification          | Pump type        | Flow range | Environment       |
|------------------------|------------------|------------|-------------------|
| Challenge Dream 05D-SU | Diaphragm pump   | 0-0.5L/min | 0-40°C<br>10%-90% |
| Challenge Dream 3D-SU  | Diaphragm pump   | 0-3L/min   |                   |
| Challenge Dream 3D     | Diaphragm pump   | 0-3L/min   |                   |
| Challenge Dream 3P     | Peristaltic pump | 0-2.3L/min |                   |
| Challenge Dream 20P    | Peristaltic pump | 0-13L/min  |                   |
| Challenge Dream 20D    | Diaphragm pump   | 0-20L/min  |                   |
| Challenge Dream 20D-SU | Diaphragm pump   | 0-20L/min  |                   |

# Challenge Dream Ordering Information

| Specification          | Flow range | Pump type        | Recommended treatment volume | Order No  |
|------------------------|------------|------------------|------------------------------|-----------|
| Challenge Dream 05D-SU | 0-0.5L/min | Diaphragm pump   | 0-2.5L                       | CDM05DSU  |
| Challenge Dream 3D-SU  | 0-3L/min   | Diaphragm pump   | 0-15L                        | CDM3DSU   |
| Challenge Dream 3D     | 0-3L/min   | Diaphragm pump   | 0-15L                        | CDM3D     |
| Challenge Dream 3P     | 0-2.3L/min | Peristaltic pump | 0-10L                        | CDM3P     |
| Challenge Dream 20P    | 0-13L/min  | Peristaltic pump | 0.1-500L                     | CDM20P    |
| Challenge Dream 20D    | 0-20L/min  | Diaphragm pump   | 0.1-500L                     | CDM20D5   |
| Challenge Dream 20D-SU | 0-20L/min  | Diaphragm pump   | 0.1-500L                     | CDM20D5SU |

Remarks (processing capacity range \*): The specific values are related to the processing time and other process conditions

# Challenge Jump SMART PUMP

Challenge Jump intelligent pump series products are based on the liquid transmission technology of four element diaphragm pump and precision Peristaltic pump, integrated with intelligent human-computer interface, and equipped with patent control software to provide perfect solutions for all liquid transmission links of the process flow in the biological pharmaceutical field.



The image shows a large, white and grey Challenge Jump Smart Pump with a touchscreen interface and a red emergency stop button. A smaller, similar unit is shown in a circular inset at the bottom left. The main unit has a black front panel with a digital display and control buttons.

More precise, efficient, and stable liquid transportation

The operation process is more convenient, easy-to-use, and smart

Better protection of biological activity

Challenge Jump Smart Pump  
Including two types of products:  
Challenge Jump and Challenge Jump Pro.:

01. Challenge Jump
02. Challenge Jump Pro

## Product Features



- 01 Product Features  
Smart
- 02 Product Features  
Intuitive operation status
- 03 Product Features  
Audit trail, conform to FDA CFR PART11
- 04 Product Features  
Multi level permission management
- 05 Product Features  
Friendly human-computer interaction interface
- 06 Product Features  
Multiple preset programs
- 07 Product Features  
One click start program
- 08 Product Features  
Optional various accessories

## Application Scenarios

### [ application ]

- Ultrafiltration
- chromatography
- Sterilization and filtration
- Cracking liquid transport
- NFF
- liquid dispensing
- Fermentation tank replenishment
- Other liquid transportation

### [ Applicable material liquid ]

- Cell culture medium
- Enzyme
- Viral culture medium
- vaccinum
- Recombinant protein
- Monoclonal antibody
- Cell supernatant

### [ Application Scenario : capsule filter ]

The intelligent pump is connected to the capsule filter to build a sterilization and filtration system. Connect a pressure sensor between the intelligent pump and the capsule filter, and set a suitable initial filtration flow rate to ensure that the filter membrane does not block prematurely due to excessive flow rate. When the pressure of the filtration system reaches the set control pressure, it intelligently and smoothly switches to the constant pressure mode. By reducing the flow rate, the system pressure is maintained constant, without causing system overpressure, pipeline collapse, filter membrane damage, and other situations. The entire process does not require personnel supervision, greatly saving manpower.

## Challenge Jump Series

The Challenge Jump series intelligent pumps can be equipped with components such as pressure sensors and flow sensors to easily meet the needs of users for constant pressure and constant flow transmission of liquids, achieving processes such as ultrafiltration, distribution, and transportation of material and liquids.



Challenge Jump comes in two series:  
Challenge Jump D and Challenge Jump P

01. Challenge Jump D

02. Challenge Jump P

### Challenge Jump D&Challenge Jump P contrast

| Type                  | D series smart four element diaphragm pump  | P series smart peristaltic pump   |
|-----------------------|---|---|
| pump head             | SS316L/PP SingleUse   | Easy-load™  |
| 特点                    | ① SS316L: High operating pressure ( $\leq 6$ Bar) and SIP capability<br>② PP pump head: SingleUse $\leq 4$ Bar operating pressure | ① Easy to install, the pump head does not touch the liquid<br>② The tube system is singleuse to avoid the risk of cross-contamination |
|                       | Adopting Siemens industrial HMI to ensure stable operation of the control system  |   |
|                       | Touch screen design for easy data input   |   |
|                       | Optional additional sensors for higher intelligent operation  |   |
| Exquisite workmanship |   |   |

# Challenge Jump Series Software Introduction



Software Features 01

Equipped with Jump Sys control software, human-computer interaction is more friendly and intuitive



Software Features 04

By configuring components such as pressure sensors and flow meters, we can achieve characteristic liquid transfer functions such as constant pressure, constant flow, and timing and quantification.



Software Features 05

The experiment method starts with one key, and the running status is displayed in real time, and the running trend graph can be viewed at the same time.



Software Features 02

Powerful and easy to operate, with built-in efficient experimental process algorithms. Users only need to set simple parameters to run with one click, saving computational trouble. Real time recording of experimental data for easy export.



Software Features 06

Equipped with alarm control function, real-time monitoring of overvoltage and overload, and real-time recording of alarm information; After the alarm is cleared, the process can be continued by pressing the reset button.



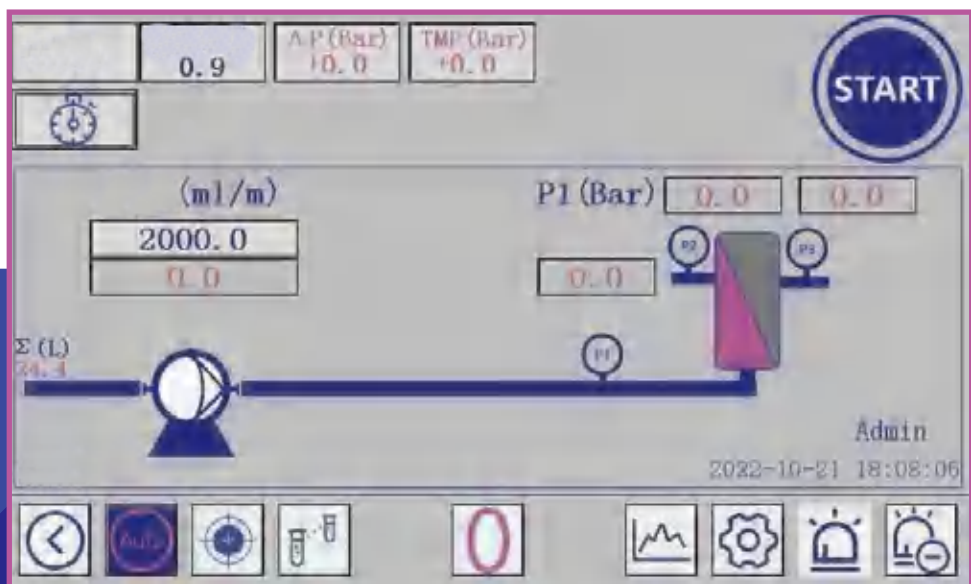
Software Features 03

Built in three major functional modes: manual, calibration, and allocation, it can store 10 process formulas to meet users' daily usage needs.



Software Features 07

The system is equipped with three-level permission.



## Challenge Jump Series parameters

| Series  | D series smart four element diaphragm pump            |            |                     |               |
|---|---|------------|---------------------|---------------|
| pump head type  | stainless steel pump head                             |            | singleuse pump head |               |
| model   | Jump 150D   | Jump 1200D | Jump 150D-SU        | Jump 1200D-SU |
| Flow range  | 1-180LPH  | 10-1200LPH | 1-180LPH            | 10-1200LPH    |
| Flow accuracy   | ±2%   |            |                     |               |
| Maximum operating pressure                                  | 6Bar@≤40°C  |            | 4bar@≤40°C          |               |
| Maximum Operative Temperature                               | Fluid: 80°C<br>CIP: 90°C<br>SIP: 130°C                |            | Fluid: 60°C         |               |
| connector type  | 1/4" TC or 3/4" TC                                    |            |                     |               |
| Pump chamber material                                       | SS316L  |            | PP                  |               |
| Diaphragm material  | TPE   |            |                     |               |
| Valve material  | EPDM  |            |                     |               |
| O-ring material   | EPDM  |            |                     |               |
| Certification documents for non-metallic materials (option) | USP <88> Class VI; FDA 21 CFR 177; BSE/TSE safety     |            |                     |               |
| Metal material certification document (option)              | Surface roughness: Ra ≤ 0.4 μ M; Ferrite content: <1% |            |                     |               |
| HMI   | 7" Siemens HMI  |            |                     |               |
| software  | Jump Sys  |            |                     |               |
| Shell material  | SS316L  |            |                     |               |
| power supply  | 220 VAC   |            |                     |               |
| Rated speed   | 3000 rpm  | 2400 rpm   | 3000 rpm            | 2400 rpm      |
| Power   | 90W   | 0.37KW     | 90W                 | 0.37KW        |
| ambient temperature   | 15-45°C   |            |                     |               |
| ambient humidity  | (10%-90%) RH, And there is no condensation phenomenon |            |                     |               |

Note: Depending on different motor/variable frequency drive combinations, the motor frequency and resulting pump speed may vary

| Series                     | P series smart peristaltic pump                       |                     |
|----------------------------|---|---------------------|
| pump head type             | Easy-load II  | Easy-load           |
| Type                       | Jump 150P   | Jump 1200P          |
| Flow range                 | 3.6-174LPH  | 36-1560LPH*         |
| Flow accuracy              | ±2%   |                     |
| Maximum operating pressure | 2.5Bar  |                     |
| Applicable pump pipe       | 13,14,16,25,17,18/ 15,24,35,36#                       | 26,73,83/ 70,88,89# |
| Pump c head material       | PPS/PSF   |                     |
| HMI                        | 7" Siemens HMI  |                     |
| software                   | Jump Sys  |                     |
| Shell material             | SS316L  |                     |
| Rated speed                | 0.1-600 rpm   |                     |
| Power                      | 150W  | 280W                |
| Power supply               | 220 VAC   |                     |
| ambient temperature        | 0-40°C  |                     |
| ambient humidity           | (10%-90%) RH, And there is no condensation phenomenon |                     |

\*Remarks: Double pump head superposition parameters

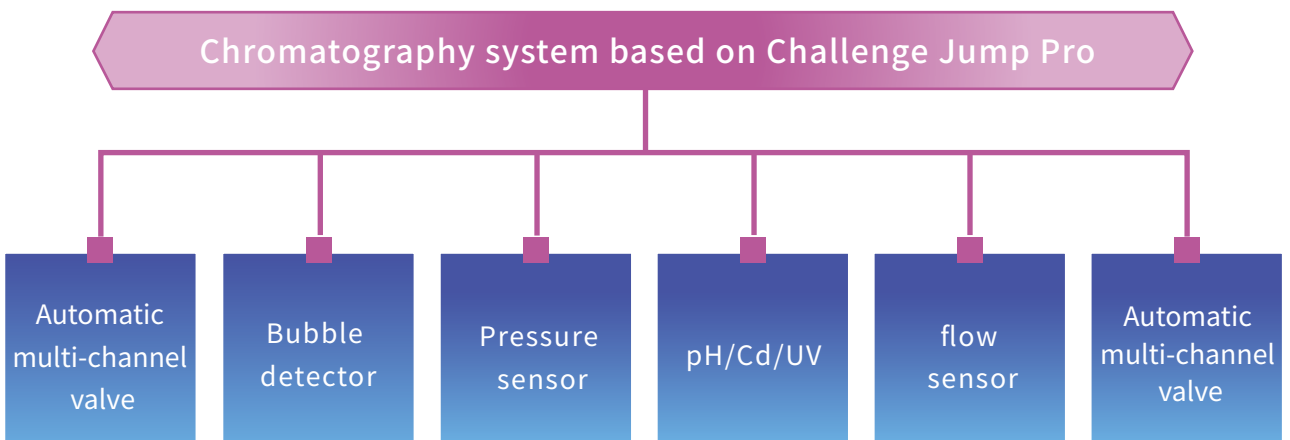
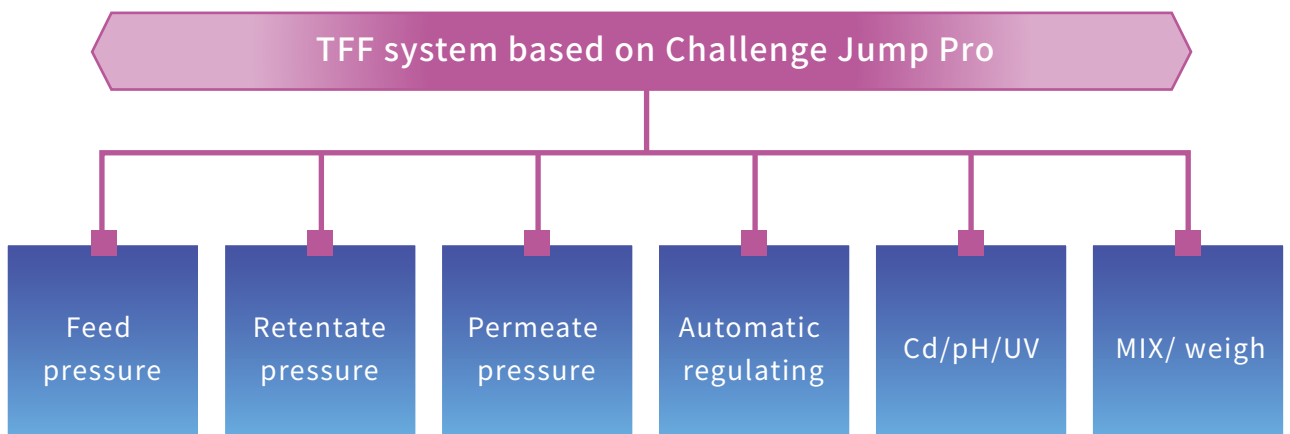
## Challenge Jump Pro Series

The Challenge Jump Pro series intelligent pumps can be further equipped with components such as UV detectors, pH, conductivity, and automatic valves, enabling the rapid construction of chromatography and ultrafiltration systems, achieving intelligent and automated industrial processes.

Challenge Jump Pro comes in two series:

01. Challenge Jump D Pro    02. Challenge Jump P Pro

### Challenge Jump Pro Series application expansion





## Challenge Jump Pro Series Software Introduction

### 01. Software Features

Friendly human-computer Interaction design design, intuitive interface and clear functions

---

### 02. Software Features

Multiple automatic program mode options, convenient and fast

---

### 03. Software Features

Simple data settings for one click operation

---

### 04. Software Features

Multi level permission management

---

### 05. Software Features

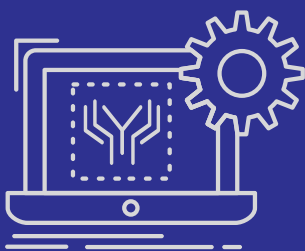
Permission can be freely allocated

---

### 06. Software Features

Audit trail

---



### Challenge Jump Pro D&Challenge Jump Pro P contrast

| Type         | D Pro series smart four element diaphragm pump  | P Peo series smart peristaltic pump   |
|--------------|---|---|
| maximum flow | 180LPH&1200LPH  | 180LPH&780LPH   |
| pump head    | SS316L/PP SinleUse  | Easy-load SinleUse  |
| Features     | ①SS316L:High operating pressure( $\leq$ 6Bar) and SIP capability<br>②PP pump head:SingleUse $\leq$ 4Bar operating pressure        | ①Easy to install, the pump head does not touch the liquid<br>②The tube system is singleuse to avoid the risk of cross-contamination |
|              | Integrated Siemens IPC, reliable operation  |   |
|              | Pre-install Jump Pro Sys softearw   |   |
|              | Equipped with multi-level permission management for easy user management  |   |
|              | Equipped with Audit trail   |   |
|              | Can be connected to pressure, flow, UV, pH, conductivity sensors, automatic valves, scales, etc., expanding multi-purpose systems |   |
|              | SS316L Housing  |   |



- 316L stainless steel material
- Surface finish Ra  $\leq$  0.4  $\mu$  M
- Equipped with CIP/SIP function



- PP/PEmaterial
- The flow rate is equivalent to that of the same model of stainless steel pump head
- No additional cleaning validation and sterilization required



- The Pipsystem can be singleuse
- Adapt to various specifications of pipelines
- There is no contact between the pump head and the material liquid
- Low shear force

**Remarks:** The Challenge Jump D&D Pro series offers stainless steel multiple use pump heads and disposable pump head options. Challenge Jump P&P Pro with Easy load pump head

# Challenge Jump Ordering Information

| Product Series        | Model                       | Type             | Flow rate range | Order number  |
|-----------------------|-----------------------------|------------------|-----------------|---------------|
| Challenge Jump Series | Challenge Jump 150D         | Diaphragm pump   | 1-180L/h        | CJP150D       |
|                       | Challenge Jump 1200D        | Diaphragm pump   | 10-800L/h       | CJP1200D3     |
|                       |                             | Diaphragm pump   | 20-1200L/h      | CJP1200D5     |
|                       | Challenge Jump 2500D        | Diaphragm pump   | 50-2500L/h      | CJP2500D      |
|                       | Challenge Jump 4400D        | Diaphragm pump   | 150-5000L/h     | CJP4400D      |
|                       | Challenge Jump 5000D        | Diaphragm pump   | 200-6000L/h     | CJP5000D      |
|                       | Challenge Jump 30D-SU       | Diaphragm pump   | 0.06-30L/h      | CJP30D        |
|                       | Challenge Jump 150D-SU      | Diaphragm pump   | 1-180L/h        | CJP150D       |
|                       | Challenge Jump 1200D-SU     | Diaphragm pump   | 10-800L/h       | CJP1200D3     |
|                       |                             | Diaphragm pump   | 20-1200L/h      | CJP1200D5     |
|                       | Challenge Jump 2500D-SU     | Diaphragm pump   | 50-2500L/h      | CJP2500D      |
|                       | Challenge Jump 4400D-SU     | Diaphragm pump   | 150-5000L/h     | CJP4400D      |
|                       | Challenge Jump 150P         | Peristaltic pump | 3.6-174L/h      | CJP150P       |
|                       | Challenge Jump 1200P        | Peristaltic pump | 36-780L/h       | CJP1200P      |
|                       |                             | Peristaltic pump | 36-1560L/h      | CJP1200P2     |
| Challenge Jump Pro 系列 | Challenge Jump 150D Pro     | Diaphragm pump   | 1-180L/h        | CJP150D-Pro   |
|                       | Challenge Jump 1200D Pro    | Diaphragm pump   | 10-800L/h       | CJP1200D3-Pro |
|                       |                             | Diaphragm pump   | 20-1200L/h      | CJP1200D5-Pro |
|                       | Challenge Jump 2500D Pro    | Diaphragm pump   | 50-2500L/h      | CJP2500D-Pro  |
|                       | Challenge Jump 4400D Pro    | Diaphragm pump   | 150-5000L/h     | CJP4400D-Pro  |
|                       | Challenge Jump 5000D Pro    | Diaphragm pump   | 200-6000L/h     | CJP5000D-Pro  |
|                       | Challenge Jump 30D-SU Pro   | Diaphragm pump   | 0.06-30L/h      | CJP30D-Pro    |
|                       | Challenge Jump 150D-SU Pro  | Diaphragm pump   | 1-180L/h        | CJP150D-Pro   |
|                       | Challenge Jump 1200D-SU Pro | Diaphragm pump   | 10-800L/h       | CJP1200D3-Pro |
|                       |                             | Diaphragm pump   | 20-1200L/h      | CJP1200D5-Pro |
|                       | Challenge Jump 2500D-SU Pro | Diaphragm pump   | 50-2500L/h      | CJP2500D-Pro  |
|                       | Challenge Jump 4400D-SU Pro | Diaphragm pump   | 150-5000L/h     | CJP4400D-Pro  |
|                       | Challenge Jump 150P Pro     | Peristaltic pump | 3.6-174L/h      | CJP150P-Pro   |
|                       | Challenge Jump 1200P Pro    | Peristaltic pump | 36-780L/h       | CJP1200P-Pro  |
|                       |                             | Peristaltic pump | 36-1560L/h      | CJP1200P2-Pro |

[ Naming convention ] D: Diaphragm P: Peristaltic SU:Single-Use

# Accessories Information



**No residue container**




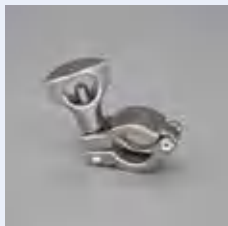







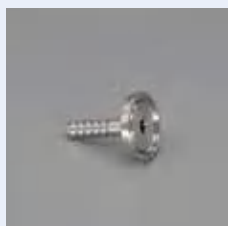



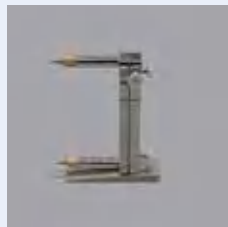



- Patent design, zero residue
- PSU material, sturdy and durable, with no damage when dropped
- pH resistance 0-14
- Good stability, dissolution and precipitation meet relevant standards
- Complies with USP VI standards



**D3 Foundation Kit**

Adapter: 3P, 3D, 05D-SU,  
3D-SU, 3D-SUEZseries

- 1/16" & 1/8" & 1/4" Luer taper, Ruhr blind plate, 1/8" & 1/4" MPC
- Ruhr Tee, Manual flow control valve
- 1/8" Y & 1/4" Y-shaped tee
- TC 3/4" switch 1/4" & 1/8", Union Fittings
- 3/4" platinum sulfide silicone pipe
- TC25 PP blind plate
- Robert clip (5# & 3#)
- TC25 PA Clamp

|   |   |  |   |
|---|---|--|---|
|    |    |    |    |
| Peristaltic pump pipe<br>(platinum vulcanization)                                   | Peristaltic pump pipe<br>(long-life pipe)   | Compression tube   | Diaphragm pump diaphragm  |
|    |    |    |    |
| Clamp(SS316L)   | Clamp (PA)  | Flow control valve   | Tee   |
|   |   |   |   |
| Blind plate (SS316L)  | Blind plate (PP)  | Sealing ring (silicone)  | Sealing ring (EPDM)   |
|  |  |  |  |
| Union Fittings  | Clamp   | CPC connector  | Union Fittings  |
|  |  |  |  |
| Cassettes adapter   | pressure gage   | Pressure sensor  | Pressure sensor (clamp)   |

Note: For more details, please contact your sales manager or call 010-53676660

**Challenge Make Achievements Attain**



Genetix Biotech Asia Ltd.

Add / 71/1, First Floor, Shivaji Marg, Najafgarh Road, New Delhi - 110015 INDIA

Tel / 011-45027000

Email / [info@genetixbiotech.com](mailto:info@genetixbiotech.com)

Web / [www.genetixbiotech.com](http://www.genetixbiotech.com)