

front

back



### NEX-GEN-ClearBLUE Prestained Protein Ladder

Cat. No. PG700-0500PI Size: 500 µl

#### Features

- 3 µl or 5 µl per loading for clear visualization during electrophoresis on 15-well or 10-well mini-gel, respectively.
- 1.5~2.5 µl per well for general Western transferring.
- Apply more for thicker (> 1.5 mm) or larger gel.

#### Description

The NEX-GEN-ClearBLUE Prestained Protein Ladder is a three-color protein standard with 12 pre-stained proteins covering a wide range molecular weights from 10 to 245 kDa. Proteins are covalently coupled with a blue chromophore except for two reference bands (one green and one red band at 25 kDa and 75 kDa respectively) when separated on SDS-PAGE (Tris-glycine buffer).

#### Application

The NEX-GEN-ClearBLUE Prestained Protein Ladder is designed for monitoring protein separation during SDS-polyacrylamide gel electrophoresis, verification of Western transfer efficiency on membranes (PVDF, nylon, or nitrocellulose) and for approximating the size of proteins.

The ladder is supplied in gel loading buffer and is ready to use.

#### Contents

Approximately 0.1~0.4 mg/ml of each protein in the buffer (20 mM Tris-phosphate, pH 7.5 at 25°C), 2 % SDS, 1 mM 2-Mercaptoethanol, 3.6 M Urea, and 15 % (v/v) Glycerol).

[www.genetixbiotech.com](http://www.genetixbiotech.com)

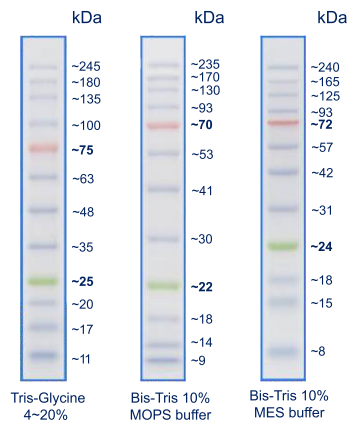


#### Storage

Stable for up to 3 months at 4°C. For long term storage, store at -20°C.

#### Guide for Molecular Weight Estimation (kDa)

Migration patterns of NEX-GEN-ClearBLUE Prestained Protein Ladder in different electrophoresis conditions are listed below:



Note. The apparent molecular weight of each protein (kDa) has been determined by calibration against an unstained protein ladder in each electrophoresis condition.

\* supplement data should be considered for more accurate adjustment.

All products are for research use only. Caution: Not intended for human or animal diagnostic or therapeutic uses.

[www.genetixbiotech.com](http://www.genetixbiotech.com)