



**FEATURES:**

**Wide Range:** With 10 recombinant proteins covering ~10-250kDa

**Ready to Use:** Supplied in a loading buffer for direct loading on gels.

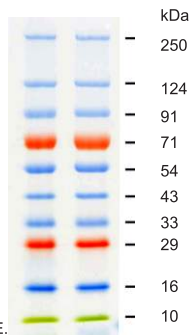
**Easy to Identify:** Orange color reference bands at ~71, 29kDa and one green reference band at 10 kDa. (Lot to lot variation of the apparent molecular weight of prestained protein ladder is ~5%)  
Sharp Bands

**APPLICATIONS:**

- Monitoring of protein separation during SDS-PAGE.
- Verifying Western transfer efficiency.
- Approximate sizing of proteins on SDS-polyacrylamide gels and Western blots.
- Locating a protein of interest for excision from an unstained preparative gel.

**QUALITY CONTROL:**

Tested in SDS-Polyacrylamide Gel electrophoresis and Western blotting.



*5µl of the Ladder is analyzed on 4-20% SDS PAGE gel in Tris-Glycine Buffer*

**Storage**  
Stable at +4°C for 3 months  
Store at -20°C for 12 months



**MFG**  
71/1, First Floor, Shivaji Marg, New Delhi - 110015 INDIA  
Phones : +91-11-45027000, Fax : +91-11-2541-9631  
E-mail : info@genetixbiotech.com Website: www.genetixbiotech.com



# 3 COLOR PRESTAINED PROTEIN LADDER



**Cat # PG-PMT2922**

**Size: 2X250µl**

**Store at -20°C**