

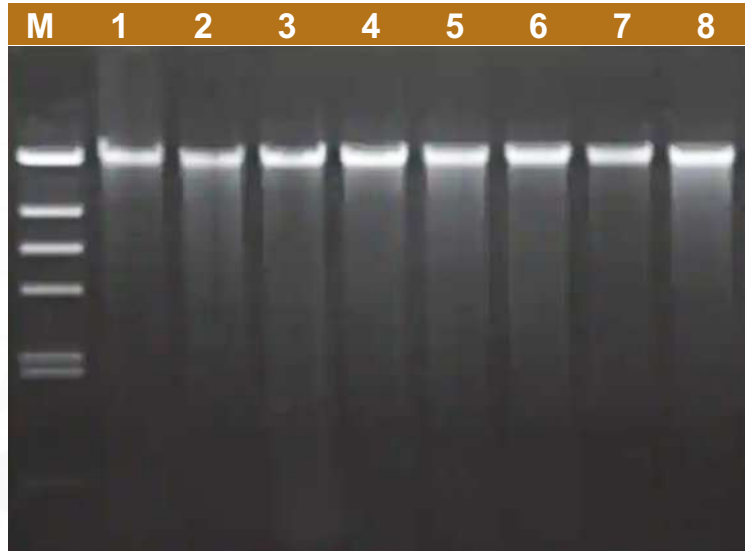
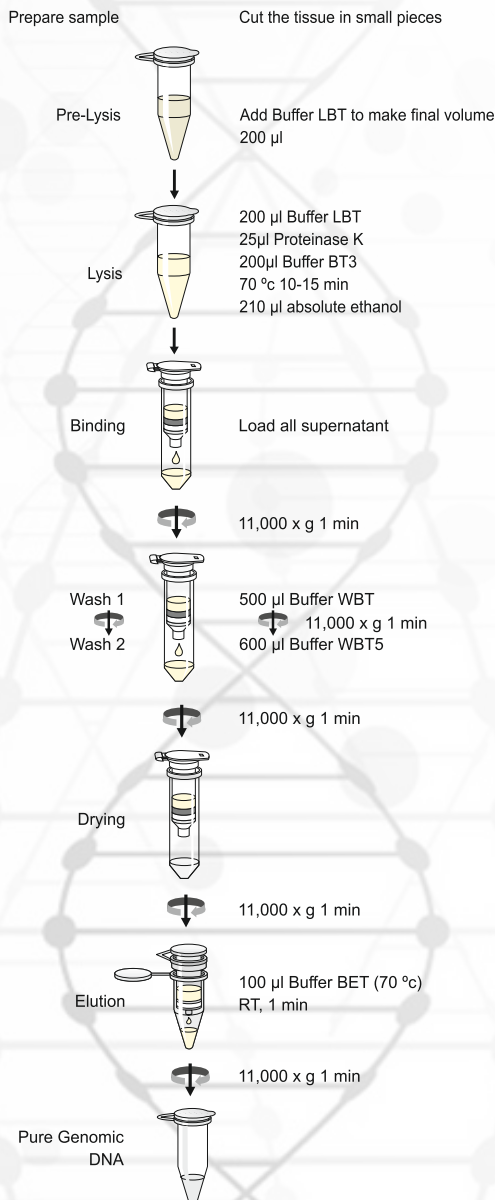
DNASure[®] Tissue Mini Kit

NP-61305
NP-61307

- Human or animal tissue and cultured cells
- Mouse or rat tails
- Bacteria
- Yeast

Cat. No.	NP-61305 / NP-61307
Selling Unit	50 Prep(s) / 250 Prep(s)
Application	Isolation of DNA
Target	DNA
Technology	Silica membrane technology
Brand	Nucleo-Pore
Format	Mini prep
Handling	Centrifugation
Lysate clarification	Centrifugation
Automated use	No
Sample material	Animal tissue, Cells, Human tissue
Sample amount	<20 mg human/animal tissue, 10 ² -10 ⁵ cultured cells
Fragment size	100 bp-approx. 60 kbp
Typical yield	20-35 µg
Theoretical binding capacity	60 µg
Typical purity A260/A280	1.7-1.9
Elution volume	60-200 µl
Preparation time	20 min/prep (excl. lysis)
Typical downstream application	enzymatic reactions, Multiplex PCR, Next Generation Sequencing
Storage temperature	15-25 °C
Shelf life (from production)	27 Month(s)
Hazardous material	Yes

Genomic DNA Purification



Genomic DNA purified from various sources using the Nucleopore **DNASure® Tissue Mini Kit**. Isolated genomic DNA from each source was fractionated by agarose gel (0.8%) electrophoresis.

Lane M: Lambda DNA/HindIII Marker;
 Lane 1: Human Bone Marrow;
 Lane 3: Rat Spleen;
 Lane 5: Mouse Liver;
 Lane 7: E.coli;

Lane 2: Human Blood;
 Lane 4: Mouse Heart;
 Lane 6: HeLa cells;
 Lane 8: DH5α cells.

Competitive Advantage:

Specifications	DNASure® Tissue Mini Kit: NP-61305/61307	Other Kits
Sample material	Animal tissue, Cells, Human tissue	Animal tissue, Cells, Human tissue
Sample amount	< 20 mg Human / Animal Tissue, 10 ² -10 ⁵ Cultured Cells	< 25 mg human / Animal Tissue, 10 ² -10 ⁶ Cultured Cells
Format	Mini spin column	Mini spin column
Fragment size	100 bp-approx. & 60 kbp	100 bp-approx. & 50 kbp
Typical yield	20-35 µg	15-30 µg
Binding capacity	60 µg	40 µg
Typical purity A260/A280	1.7-1.9	1.7-1.9
Elution volume	60-200 µL	50-200 µL
Preparation time	20 min/prep (excl. lysis)	20 min/prep (excl. lysis)

