



PCR, Assay, Storage Solutions

Superior Performance in virtually every Applications

Amplify your targets with our PCR Products for optimum results

- PCR plastics help you consistently arrive at results quicker, with more assurance and less optimization.
- Designed and validated to work with most thermal cyclers.
- Precisely manufactured using injection molding facility for optimum fit and cycling performance
- With superior stability
- Adherence to SBS standards
- Maximum sample recovery with thin walled molded polypropylene
- Recommended for sequencing protocols

Options for every format and throughput need
Choose from tubes, tube strips, plates, adhesive film,
and accessories for any throughput need.

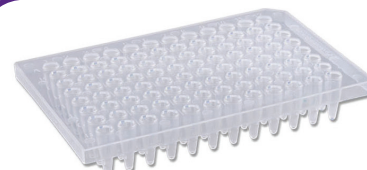
**DNase/RNase/
Human DNA
Free**



PCR Tube & Tube Strips



Non-Skirted



Semi-Skirted



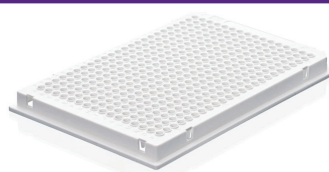
Semi-Skirted Raised Rim



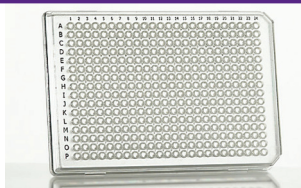
384well Black Frame White Well



Semi-Skirted White



384well White Frame Clear Well



384well Clear Well Clear Frame



Seal

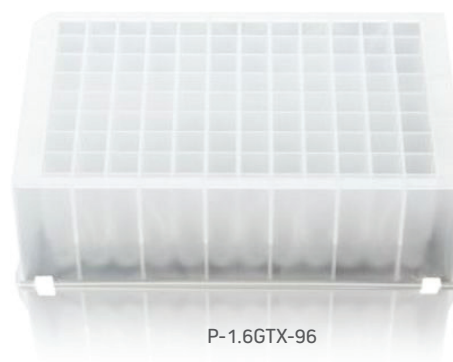
Ask for PCR product compatibility chart with different PCR & qPCR Cylers

Deepwell Plates

We provide deepwell plates that help you discover better. Covering a vast array of application areas available in different well types (Round, Square, V-Bottom) formats (24/48/96), plastic types, and colors – clear, white, black. Have been engineered to deliver the highest quality data for high throughput screening. Footprint dimensions meet the SBS industry standard, compatible with different instruments.



P-2.2GTX-96



P-1.6GTX-96



Manufactured in a fully automated clean room



Free of Detectable DNase, RNase and Endotoxin inhibitors



Raised rim design to avoid contamination



Provides Temperature Resistance Up to -80°C



Ensures Chemical Resistance and Sample Integrity with Longterm Storage Needs



Comes with An Easy and Reliable Stacking



Fully Autoclavable



Alphanumeric indexing for Quick and Easy sample Identification

Assay Plates - Cellular Imaging

Black Plate has low auto-fluorescence with efficient light blocking ability to obtain most accurate result in fluorescence experiments. Also, microscopic observation can be done simultaneously with fluorescence experiment due to its highly transparent bottom.

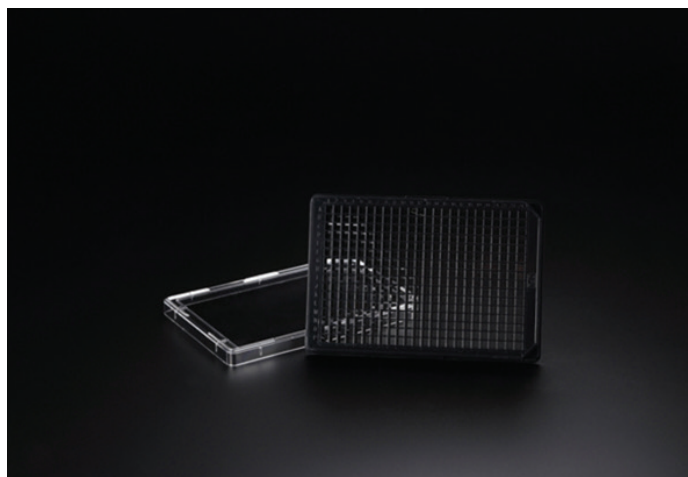
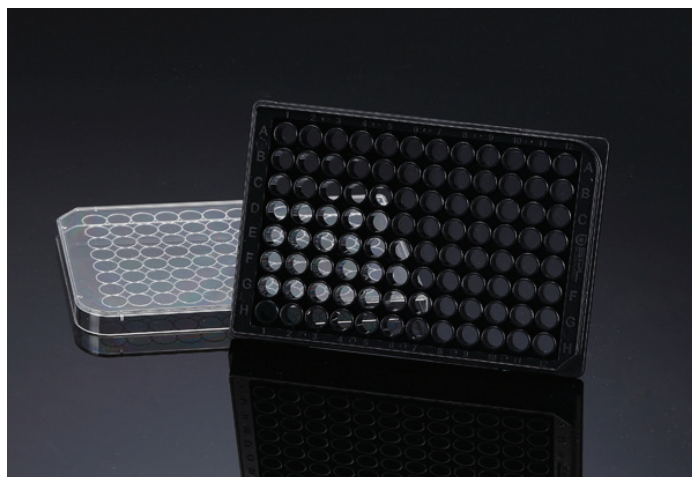
Surface materials for Black Plates.

Glass : Naturally charged, good growth surface for adherent cells.

FLux : Surface modified plastic film (188 µm thick), optimal for confocal microscopy.

PS : Thinner than existing PS plate, good for cell attachment and microscopic observation.

- Black Wall/Clear Bottom
- Bottom materials: Glass or FLux or PS
- Designed to prevent cross contamination
- Effective gas exchange lid inner design
- Alphanumeric labeling
- Individual packaging in plastic tray (Cat.No. 33196/33296/332384/333384)
- Non – pyrogenic
- Non – cytotoxic
- DNase / RNase – free
- Human DNA – free



Genetix Biotech Asia Pvt. Ltd.

71/1, First Floor, Shivaji Marg, Najafgarh Road, New Delhi - 110015 - INDIA

phone : +91-11-45027000 ~ email : info@genetixbiotech.com ~ www.genetixbiotech.com